

APPLICATION NOTE

MD8470A

Signaling Tester

DRM Version

ANRITSU CORPORATION

Copyright © 2005 by ANRITSU CORPORATION

The contents of this manual shall not be disclosed in any way or reproduced in any media without the express written permission of Anritsu Corporation.

MD8470A Signaling Tester Application Note

- DRM Version -



Anritsu Corporation
Measurement Business Center
Wireless Measurement Division
July 2005
Ver 1.0

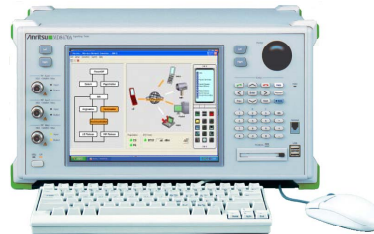
Discover What's Possible™
MD8470A-E-F-6

Slide 1

Anritsu

Contents

1. Glossary of Terms
2. Reference Specifications
3. What is DRM?
4. DRM Structure
5. Flow of DRM Protocol
6. Testing DRM
 - 6-1. Testing Forward lock contents
 - 6-2. Testing Combined delivery lock contents
 - 6-3. Testing Separate delivery lock contents
7. Advantages of Using MD8470A



Discover What's Possible™
MD8470A-E-F-6

Slide 2

Anritsu

1. Glossary of Terms



DRM:	Digital Rights Management
HTTP:	Hyper Text Transfer Protocol
OMA:	Open Mobile Alliance
SMS:	Short Message Service
UE:	User Equipment
WAP:	Wireless Application Protocol
WNS:	Wireless Network Simulator

2. Reference Standards



- DRM Content Format
OMA-TS-DRM-DCF-V2_0-20050614-C
- DRM Specification
OMA-TS-DRM-DRM-V2_0-20050614-C
- DRM Rights Expression Language
OMA-TS-DRM-REL-V2_0-20050614-C

3. What is DRM?



- DRM is a technology for protecting the copyright of digital data content.
- The OMA defines three management methods: Forward lock, Combined delivery lock, and Separate delivery lock

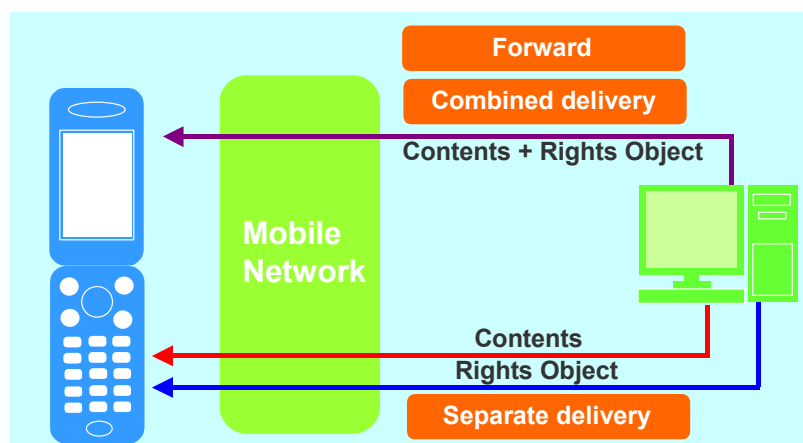


*DRM is standardised by OMA.

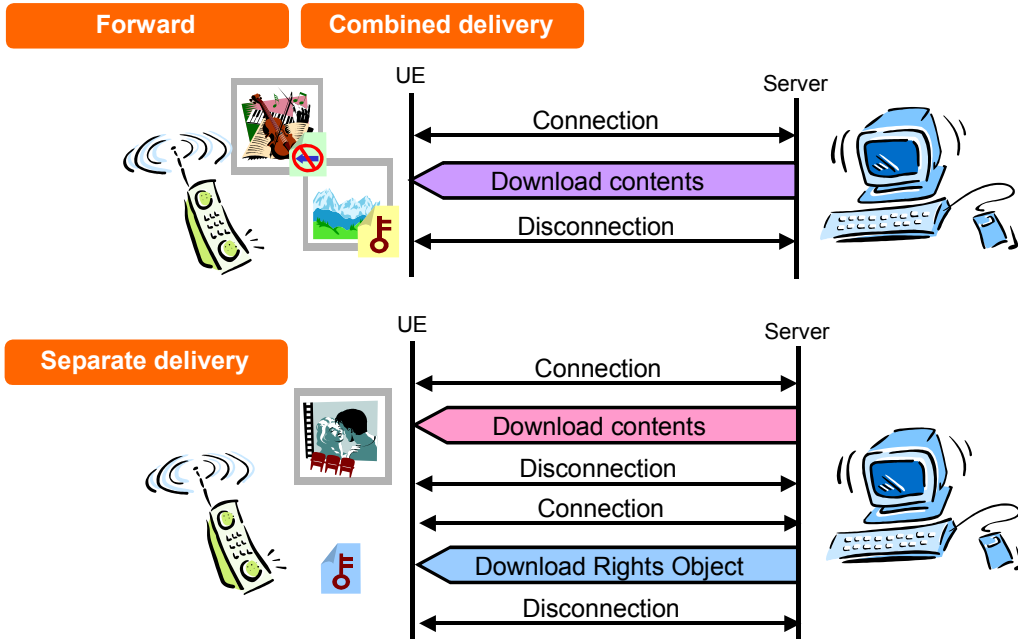
4. DRM Structure



- Forward lock and Combined delivery lock obtain the contents and rights information simultaneously.
- Separate delivery lock obtains the contents and rights information separately. After obtaining the contents, the rights information is obtained using either an HTTP/WAP connection or SMS Push.



5. Flow of DRM Protocol



Discover What's Possible™
MD8470A-E-F-6

Slide 7

Anritsu

6. Testing DRM



6-1. Testing Forward lock contents



6-2. Testing Combined delivery lock contents



6-3. Testing Separate delivery lock contents



Discover What's Possible™
MD8470A-E-F-6

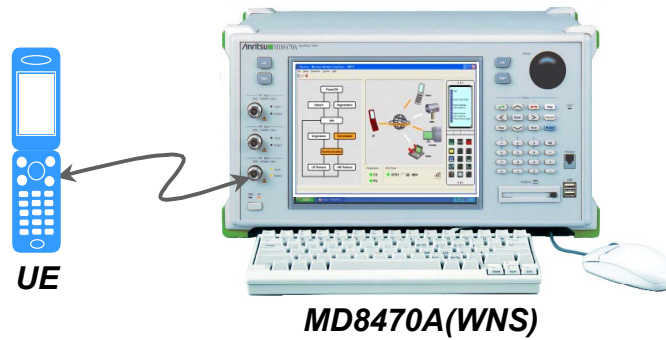
Slide 8

Anritsu

6-1. Testing Forward Lock Contents (1/2)



- Required Hardware & Software



Discover What's Possible™
MD8470A-E-F-6

Slide 9

Anritsu

6-1. Testing Forward Lock Contents (2/2)



- Downloading Forward Lock Contents

- ✓ Forward lock copies the set contents to the web server built into the MD8470A. [1]
- ✓ The contents are downloaded. [2]
- ✓ The downloaded contents are confirmed without requiring transfer. [3]



Discover What's Possible™
MD8470A-E-F-6

Slide 10

Anritsu

6-2. Testing Combined Delivery Lock Contents (2/2)



- **Required Hardware & Software**



Discover What's Possible™
MD8470A-E-F-6

Slide 11

Anritsu

6-2 . Combined Delivery Lock Contents (2/2)



- **Downloading Combined Delivery Lock Contents**

- ✓ Combined delivery lock copies the set contents to the Web server built into the MD8470A. [1]
- ✓ The contents are downloaded. [2]
- ✓ If the expiry date of the downloaded contents has been exceeded, inability to replay the contents is confirmed. [3]



Discover What's Possible™
MD8470A-E-F-6

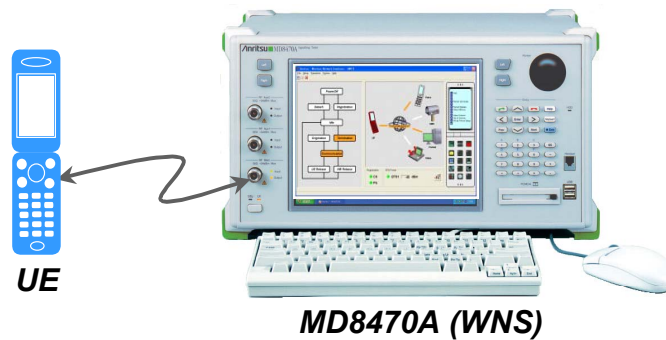
Slide 12

Anritsu

6-3. Testing Separate Delivery Lock Contents (1/2)



- **Required Hardware & Software**

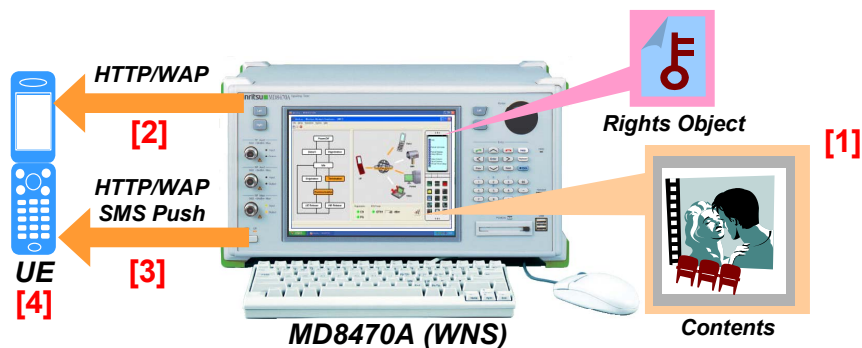


6-3. Testing Separate Delivery Lock Contents (2/2)



- **Downloading Separate Delivery Lock Contents**

- ✓ Separate delivery-lock copies the set contents and rights information to the Web server built into the MD8470A. [1]
- ✓ The contents are downloaded. [2]
- ✓ The rights information is obtained by HTTP/WAP or SMS Push. [3]
- ✓ The ability to replay the contents is confirmed. [4]



7. Advantages of Using MD8470A



■ Easy DRM Testing

By using the MD8470A DRM sample contents, confirmation of the Forward lock, Combined delivery lock, and Separate delivery lock contents can be confirmed easily.

■ Other Equipment or PC Not Required

Since a Web server is built into the MD8470A, customers can test the provided sample contents using just the MD8470A without needing any other equipment or a separate PC.



Anritsu

Specifications are subject to change without notice.

ANRITSU CORPORATION

1800 Onna, Atsugi-shi, Kanagawa, 243-8555 Japan
Phone: +81-46-223-1111
Fax: +81-46-296-1264

● U.S.A.

ANRITSU COMPANY TX OFFICE SALES AND SERVICE

1155 East Collins Blvd., Richardson, TX 75081, U.S.A.
Toll Free: 1-800-ANRITSU (267-4878)
Phone: +1-972-644-1777
Fax: +1-972-644-3416

● Canada

ANRITSU ELECTRONICS LTD.

700 Silver Seven Road, Suite 120, Kanata,
ON K2V 1C3, Canada
Phone: +1-613-591-2003
Fax: +1-613-591-1006

● Brasil

ANRITSU ELETRÔNICA LTDA.

Praca Amadeu Amaral, 27 - 1 andar
01327-010 - Paraiso, Sao Paulo, Brazil
Phone: +55-11-3283-2511
Fax: +55-11-3886940

● U.K.

ANRITSU LTD.

200 Capability Green, Luton, Bedfordshire LU1 3LU, U.K.
Phone: +44-1582-433280
Fax: +44-1582-731303

● Germany

ANRITSU GmbH

Grafenberger Allee 54-56, 40237 Düsseldorf, Germany
Phone: +49-211-96855-0
Fax: +49-211-96855-55

● France

ANRITSU S.A.

9, Avenue du Québec Z.A. de Courtabœuf 91951 Les
Ulis Cedex, France
Phone: +33-1-60-92-15-50
Fax: +33-1-64-46-10-65

● Italy

ANRITSU S.p.A.

Via Elio Vittorini, 129, 00144 Roma EUR, Italy
Phone: +39-06-509-9711
Fax: +39-06-502-2425

● Sweden

ANRITSU AB

Borgafjordsgatan 13 164 40 Kista, Sweden
Phone: +46-853470700
Fax: +46-853470730

● Finland

ANRITSU AB

Teknobulevardi 3-5, FI-01530 Vantaa, Finland
Phone: +358-9-4355-220
Fax: +358-9-4355-2250

● Denmark

Anritsu AB Danmark

Korskildelund 6 DK - 2670 Greve, Denmark
Phone: +45-36915035
Fax: +45-43909371

● Singapore

ANRITSU PTE LTD.

10, Hoe Chiang Road #07-01/02, Keppel Towers,
Singapore 089315
Phone: +65-6282-2400
Fax: +65-6282-2533

● Hong Kong

ANRITSU COMPANY LTD.

Suite 923, 9/F., Chinachem Golden Plaza, 77 Mody
Road, Tsimshatsui East, Kowloon, Hong Kong, China
Phone: +852-2301-4980
Fax: +852-2301-3545

● P. R. China

ANRITSU COMPANY LTD.

Beijing Representative Office

Room 1515, Beijing Fortune Building, No. 5 North
Road, the East 3rd Ring Road, Chao-Yang District
Beijing 100004, P.R. China
Phone: +86-10-6590-9230

● Korea

ANRITSU CORPORATION

8F Hyun Juk Bldg. 832-41, Yeoksam-dong,
Kangnam-ku, Seoul, 135-080, Korea
Phone: +82-2-553-6603
Fax: +82-2-553-6604

● Australia

ANRITSU PTY LTD.

Unit 3/170 Forster Road Mt. Waverley, Victoria, 3149,
Australia
Phone: +61-3-9558-8177
Fax: +61-3-9558-8255

● Taiwan

ANRITSU COMPANY INC.

7F, No. 316, Sec. 1, NeiHu Rd., Taipei, Taiwan
Phone: +886-2-8751-1816
Fax: +886-2-8751-1817

050203